

IF647 Anti-Mouse Ly-6C Monoclonal Antibody



天津三箭生物技术股份有限公司
Tianjin Sungene Biotech Co., Ltd.
精准 高效 稳定 Precision Efficient Stable

Catalog Number	Vial Size
M100L4-40A	25 µg
M100L4-40C	100 µg

Market | 400-621-0003
marketing@sungenebiotech.com

Support | 022-66211636-8024
techsupport@sungenebiotech.com

Web | www.sungenebiotech.com

Important Note: Centrifuge before opening to ensure complete recovery of vial contents.
This product is guaranteed up to one year from purchase.

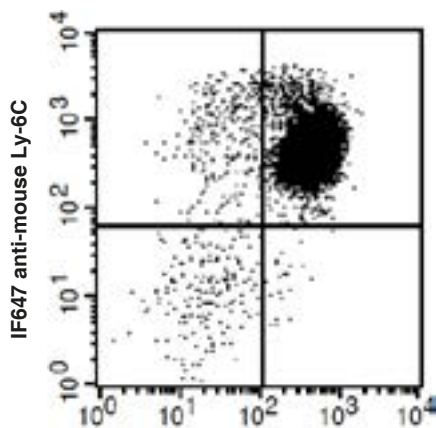
Purified Antibody Characterization

Clone	Isotype	Reactivity
Monts 1	Rat IgG2a	Mouse

Description

Most hemopoietic cells express one or more members of Ly-6 family. The expression of Ly-6 varies with development stage and activation. Ly-6C is a 14-17 kD GPI-linked surface protein expressed on mouse monocyte/macrophage cells, endothelial cells, neutrophils, and some T cell subsets. Ly-6C is reported to be an indicator of memory CD8⁺ T cells.

Illustration of Immunofluorescent Staining



FITC anti-mouse CD11b

C57BL/6 mouse granulocytes of bone marrow
stained with FITC anti-mouse CD11b and
IF647 anti-mouse Ly-6C

Product Information

Conjugation:IF647

Formulation: PBS pH 7.2, 0.09% NaN₃,
0.2% BSA

Concentration:0.5mg/ml

Storage: Keep as concentrated solution. Store
at 4°C and protected from prolonged exposure
to light. **Do not freeze.**

Application: Recommended Application: FC

Usage: Each lot of this antibody is quality
control tested by immunofluorescent staining
with flow cytometric analysis (The amount of
the reagent is suggested to be used ≤0.25 µg
/10⁶ cells in 100 µl). Since applications vary,
the appropriate dilutions must be determined
for individual use.

References

- [1] Jutila MA, et al. 1988. Eur. J. Immunol.
18:1819.
- [2] Cerwenka A, et al. 1998. J. Immunol.
161:97.

For Research Use Only.